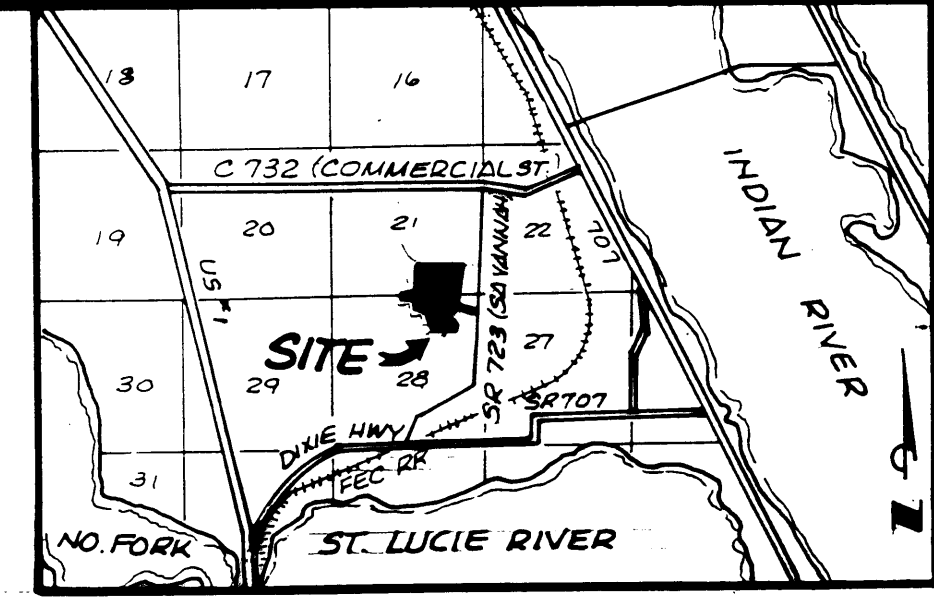


PLAT OF PINECREST LAKES PHASE VIII



LOCATION MAP

I, MARSHA G. STILLER, COUNTY CLERK OF MARTIN COUNTY, FLORIDA, HEREBY CERTIFY THAT THIS PLAT HAS BEEN FILED FOR RECORD IN PLAT BOOK 11 PAGE 47. PUBLIC RECORDS OF MARTIN COUNTY, FLORIDA, THIS DAY OF A.D. 19 .

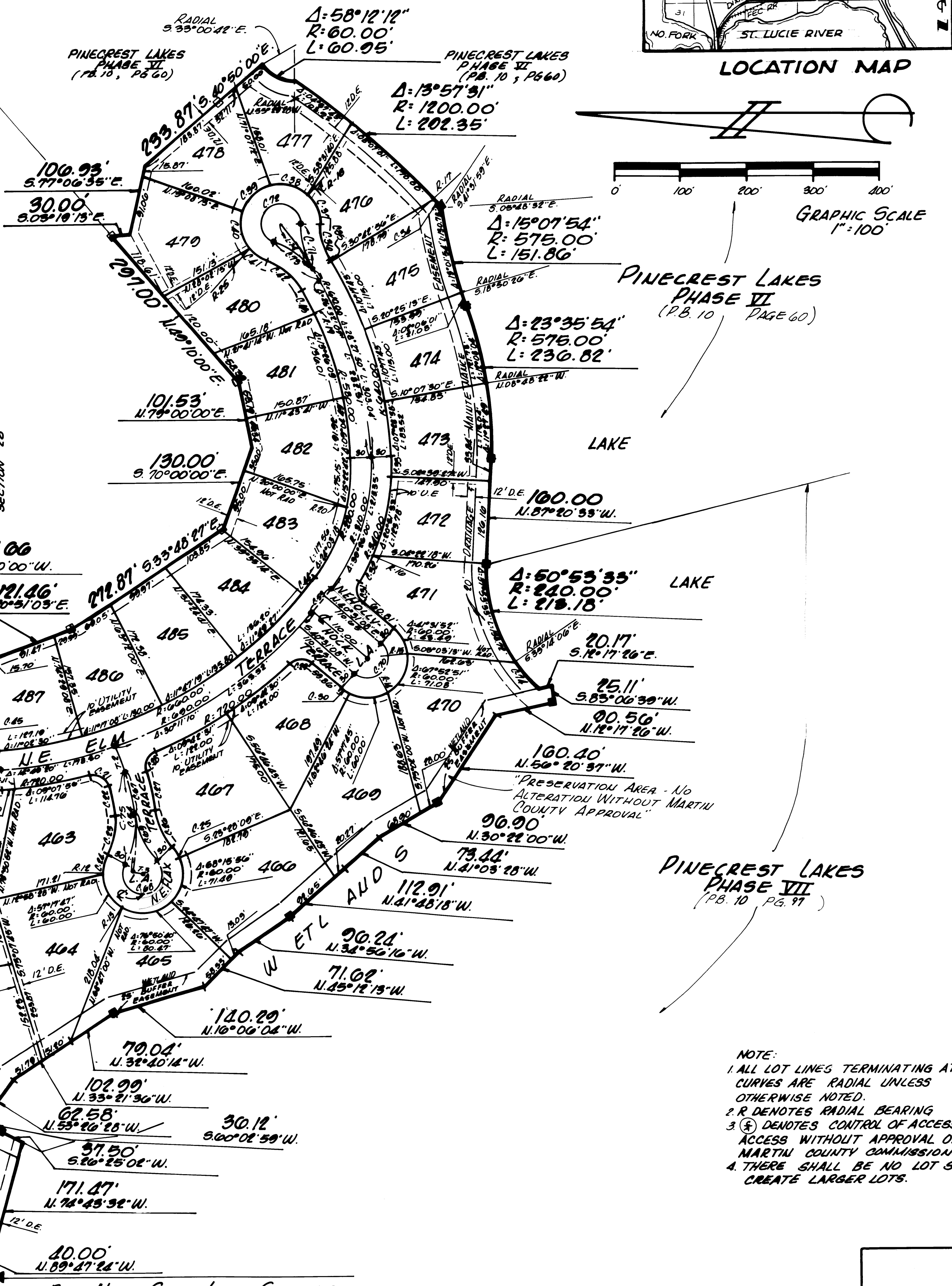
MARSHA G. STILLER, CLERK
MARTIN COUNTY, FLORIDA

BY _____

FILE NO. _____

CENTERLINE DATA				Curve Data				Curve Data										
Delta Angle	Radius	Arc Length	Curve No.	Delta Angle	Radius	Arc Length	Radial No.	Bearing	Delta Angle	Radius	Arc Length	Curve No.	Delta Angle	Radius	Arc Length	Radial No.	Bearing	
80°41'27"	25.00	35.21	C-1	57°14'00"	95.00	94.90	R-1	S.62°32'12"W.	57°14'00"	95.00	94.90	C-50	29°38'30"	95.00	49.15	R-2	S.39°26'10"W.	
19°57'20"	160.00	55.73	C-2	13°32'20"	405.00	95.70	R-3	S.40°17'59"E.	13°32'20"	405.00	95.70	C-52	13°32'20"	405.00	95.70	R-3	S.40°17'59"E.	
60°00'01"	60.00	62.83	C-3	03°44'00"	690.00	44.96	R-4	S.02°40'12"W.	03°44'00"	690.00	44.96	C-53	03°44'00"	690.00	44.96	R-4	S.02°40'12"W.	
76°52'48"	60.00	80.51	C-4	30°04'40"	295.00	154.86	R-5	N.54°40'00"E.	30°04'40"	295.00	154.86	C-54	30°04'40"	295.00	154.86	R-5	N.54°40'00"E.	
20°05'28"	50.00	61.17	C-5	33°58'00"	230.00	136.35	R-6	N.78°58'15"W.	33°58'00"	230.00	136.35	C-55	33°58'00"	230.00	136.35	R-6	N.78°58'15"W.	
20°40'37"	190.00	68.57	C-6	43°46'25"	150.00	114.60	R-7	N.41°11'10"E.	43°46'25"	150.00	114.60	C-56	43°46'25"	150.00	114.60	R-7	N.41°11'10"E.	
62°10'38"	25.00	31.13	C-7	09°34'52"	160.00	26.76	R-8	S.32°00'00"W.	09°34'52"	160.00	26.76	C-57	09°34'52"	160.00	26.76	R-8	S.32°00'00"W.	
08°06'23"	125.00	17.65	C-8	43°03'22"	130.00	97.69	R-9	S.26°46'00"E.	43°03'22"	130.00	97.69	C-58	43°03'22"	130.00	97.69	R-9	S.26°46'00"E.	
05°39'24"	435.00	42.95	C-9	216°36'58"	30.00	113.42	R-10	S.85°32'00"E.	216°36'58"	30.00	113.42	C-59	216°36'58"	30.00	113.42	R-10	S.85°32'00"E.	
90°31'26"	25.00	39.50	C-10	70°05'28"	80.00	97.87	R-11	N.85°31'38"E.	70°05'28"	80.00	97.87	C-60	70°05'28"	80.00	97.87	R-11	N.85°31'38"E.	
23°33'40"	60.00	24.67	C-11	231°19'04"	30.00	121.12	R-12	S.01°03'45"E.	231°19'04"	30.00	121.12	C-61	231°19'04"	30.00	121.12	R-12	S.01°03'45"E.	
25°42'24"	60.00	26.92	C-12	51°19'04"	130.00	116.44	R-13	S.58°21'33"E.	51°19'04"	130.00	116.44	C-62	51°19'04"	130.00	116.44	R-13	S.58°21'33"E.	
51°19'04"	100.00	89.57	C-13	14°11'08"	405.00	100.27	R-14	N.59°55'51"E.	14°11'08"	405.00	100.27	C-63	14°11'08"	405.00	100.27	R-14	N.59°55'51"E.	
127°38'08"	25.00	55.69	C-14	127°38'08"	55.00	122.52	R-15	N.07°57'00"W.	127°38'08"	55.00	122.52	C-64	127°38'08"	55.00	122.52	R-15	N.07°57'00"W.	
58°20'40"	60.00	61.10	C-15	231°19'04"	30.00	121.12	R-16	N.23°31'00"E.	231°19'04"	30.00	121.12	C-65	231°19'04"	30.00	121.12	R-16	N.23°31'00"E.	
66°02'16"	60.00	69.15	C-16	51°19'04"	130.00	116.44	R-17	N.42°24'44"W.	51°19'04"	130.00	116.44	C-66	51°19'04"	130.00	116.44	R-17	N.42°24'44"W.	
57°17'45"	60.00	89.57	C-17	12°26'55"	295.00	64.09	R-18	S.46°16'15"E.	12°26'55"	295.00	64.09	C-67	12°26'55"	295.00	64.09	R-18	S.46°16'15"E.	
08°53'00"	200.00	31.01	C-18	251°18'49"	30.00	131.59	R-19	S.25°11'01"E.	251°18'49"	30.00	131.59	C-68	251°18'49"	30.00	131.59	R-19	S.25°11'01"E.	
75°31'28"	25.00	31.01	C-19	35°55'45"	130.00	81.52	R-20	N.12°43'50"E.	35°55'45"	130.00	81.52	C-69	35°55'45"	130.00	81.52	R-20	N.12°43'50"E.	
01°26'00"	720.00	18.01	C-20	180°00'00"	30.00	94.25	R-21	N.69°55'19"W.	180°00'00"	30.00	94.25	C-70	180°00'00"	30.00	94.25	R-21	N.69°55'19"W.	
88°35'46"	25.00	38.66	C-21	31°52'15"	130.00	72.31	R-22	N.73°07'27"W.	31°52'15"	130.00	72.31	C-71	31°52'15"	130.00	72.31	R-22	N.73°07'27"W.	
10°01'30"	265.00	46.37	C-22	250°50'33"	30.00	131.34	R-23	N.73°07'27"W.	250°50'33"	30.00	131.34	C-72	250°50'33"	30.00	131.34	R-23	N.73°07'27"W.	
34°57'18"	100.00	61.01	C-23	40°53'58"	130.00	92.80	R-24	N.89°29'40"W.	40°53'58"	130.00	92.80	C-73	40°53'58"	130.00	92.80	R-24	N.89°29'40"W.	
29°36'01"	60.00	31.00	C-24	7°57'38"	610.00	84.75	R-25	N.76°26'00"E.	7°57'38"	610.00	84.75	C-74	7°57'38"	610.00	84.75	R-25	N.76°26'00"E.	
19°18'24"	60.00	20.22	C-25	34°57'18"	130.00	79.31			34°57'18"	130.00	79.31	C-75	34°57'18"	130.00	79.31			
35°55'45"	100.00	62.71	C-26									C-75						
10°29'12"	325.00	59.48	C-27															
83°49'13"	25.00	36.57	C-28															
83°26'55"	25.00	36.41	C-29															
13°17'32"	60.00	13.92	C-30															
80°29'52"	25.00	35.12	C-31															
07°30'00"	340.00	44.50	C-32															
05°18'19"	340.00	31.48	C-33															
00°52'47"	1200.00	18.42	C-34															
00°23'46"	640.00	4.42	C-35															
31°52'15"	100.00	55.63	C-36															
47°01'49"	60.00	49.25	C-37															
57°17'45"	60.00	60.00	C-38															
57°17'45"	60.00	60.00	C-39															
57°17'45"	60.00	60.00	C-40															
31°55'29"	60.00	33.43	C-41															
40°53'58"	100.00	71.38	C-42															
04°00'00"	580.00	40.49	C-43															
02°48'06"	660.00	32.27	C-44															
01°37'57"	375.00	10.68	C-45															
08°01'57"	375.00	52.57	C-46															
11°14'05"	350.00	68.63	C-47															
10°25'42"	350.00	63.70	C-48															
86°52'30"	65.00	98.56	C-49															
13°00'00"	240.00	54.45	C-74															

Tangent No.	Bearing	Distance
T-1	N. 40°28'52"W.	10.00
T-2	S. 70°42'18"W.	41.00
T-3	S. 10°46'58"W.	15.00
T-4	S. 55°33'40"W.	30.00
T-5	S. 10°59'20"E.	30.00



GRAPHIC SCALE
1" = 100'

PINECREST LAKES
PHASE I
(P.B. 7, PAGE 79)

PINECREST LAKES
PHASE VII
(P.B. 10, PAGE 97)

NOTE:
1. ALL LOT LINES TERMINATING AT CURVES ARE RADIAL UNLESS OTHERWISE NOTED.
2. R DENOTES RADIAL BEARING.
3. ⊕ DENOTES CONTROL OF ACCESS LINE. NO VEHICULAR ACCESS WITHOUT APPROVAL OF THE BOARD OF MARTIN COUNTY COMMISSIONERS.
4. THERE SHALL BE NO LOT SPLITS EXCEPT TO CREATE LARGER LOTS.

PARCEL "A" P.B. 7, P. 79
P.O.B. 715.25' N00°20'54"E.
WEST LINE OF SECTION 21
SOUTHWESTERLY CORNER OF SECTION 21/37/41
PLAT NO. 1, SAINT LUCIE GARDENS
P.B. 1, PAGE 35
SECTION 29, BLOCK 1

PINECREST LAKES PHASE VIII RECORD PLAT		SHEET 2 OF 2	
Dr. M.E.	F.B. Pl.	Scale 1" = 100'	
Ck. J.D.	P.G.	Date 10-3-80	FPS-004
Ap. J.D.		Job No. 2510-2	